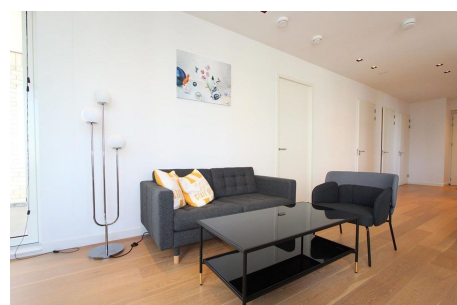
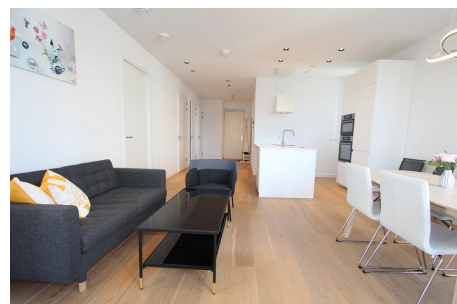
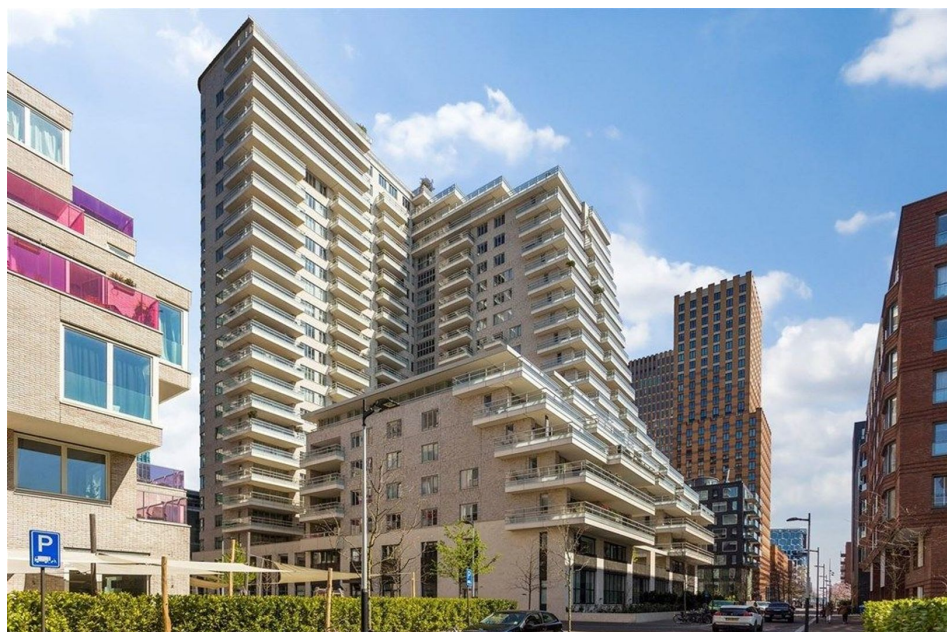


*Save time and money go directly to
the best and quickest agent*



Gustav Mahlerlaan, Amsterdam

This urban apartment at WTC has 2 bedrooms, modern kitchen, optional private parking place in the underground garage and 24 hours security. You have a brilliant public transport accessibility in front of the door: directly to the airport and just 8 min away from the city center! WTC also gives easy access to the Highway in case you prefer to travel by car. Amsterdam South is surrounded by Beatrix and Amstel Park within walking distance. Also you could enjoy the outdoors in the Amsterdam Forest, also easy to reach from WTC. There are various shops, restaurants and the shopping center nearby.

Type	: Up and downstairs house
Decoration	: Fully furnished
Living Surface	: 85m ²
Rooms	: 3

Rent € 2.400 p.m. excl. per month