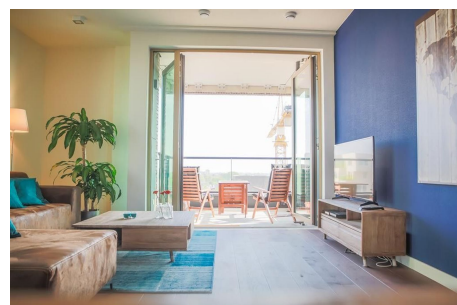


*Save time and money go directly to
the best and quickest agent*



Gustav Mahlerlaan, Amsterdam

Luxurious, furnished, turn-key apartment with an efficient layout of approx. 90 m² situated on the 10th floor of 900 Mahler, a unique residential tower block with fantastic views over the city of Amsterdam. A very short distance to the A10 ring road, the historical centre of Amsterdam, RAI Congress & Exhibitions Centre and Schiphol Airport. The apartment includes the 900 Mahler + James service, which is a personal assistant service, a host on site, 7 days a week.

Type	: Upper floor apartment
Decoration	: Fully furnished
Living Surface	: 90m ²
Rooms	: 2

Rent € 2.000 p.m. excl. per month