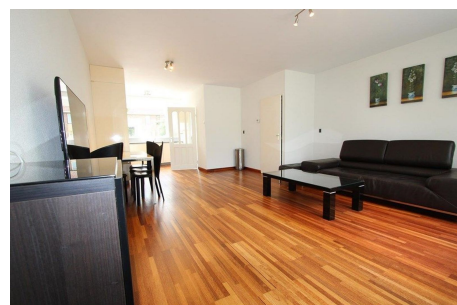
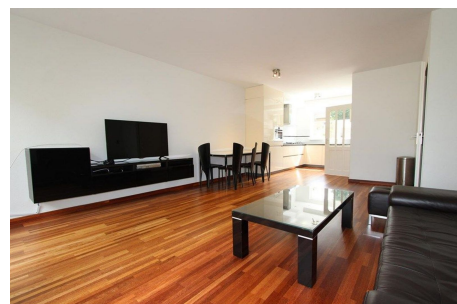


Save time and money go directly to  
the best and quickest agent



## Jol, Amstelveen

### Details:

Size of the house (m2) approximately 150 m2

Number of bedrooms: 4

Number of bathrooms: 1

Type of house: Family house

Quality of public transportation: Good

<b>Type</b>	: Terraced house
<b>Decoration</b>	: Fully furnished
<b>Garden</b>	: Yes, Backyard, 100×100cm
<b>Living Surface</b>	: 150m <sup>2</sup>
<b>Rooms</b>	: 5

**Rent € 2.650 p.m. excl. per month**