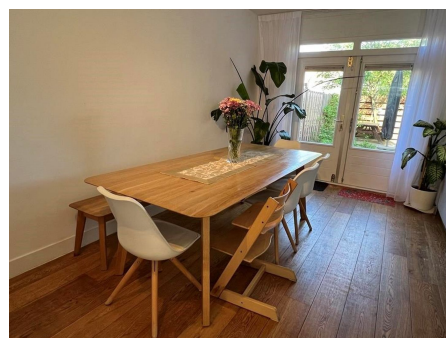
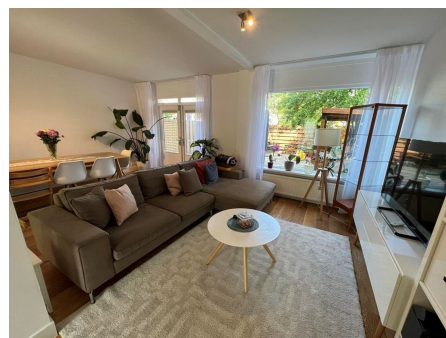


*Save time and money go directly to  
the best and quickest agent*



## Majella, Amstelveen

The house is located in the quiet residential neighbourhood of Groenelaan. It has a favourable location relative to schools (e.g. the International School), shopping centre Groenhof, public transport and several exit roads. By car the A-9 and A-10 motor way are easily reached. You will find public transport practically on your doorstep and the various bus lines take you to Schiphol Airport or Amsterdam. The express tram number 51 has a direct connection to the city centre of Amsterdam. By bicycle it will take you only 20 minutes to reach Amsterdam Zuid and within 10 minutes you are right

Type	: Corner house
Decoration	: Fully furnished
Garden	: Yes, Backyard, 500×600cm
Living Surface	: 150m <sup>2</sup>
Rooms	: 5

**Rent € 2.800 p.m. excl. per month**