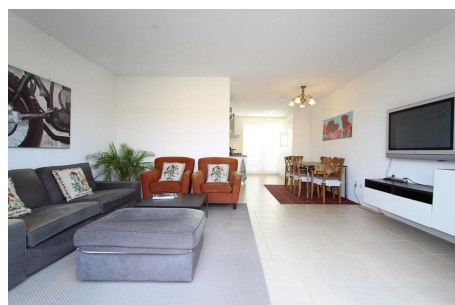


Save time and money go directly to
the best and quickest agent



Jasmijnlaan, Amstelveen

Details:

- Size of the property: 120 m²
- Number of bedrooms: 3
- Number of bathrooms: 1
- Type of house: Family House
- Construction year of the house: 2009

Type	: Patio house
Decoration	: Semi Furnished, Optionally furnished
Garden	: Yes, Backyard, West, 1000x600cm
Living Surface	: 120m ²
Rooms	: 4

Rent € 3.000 p.m. excl. per month