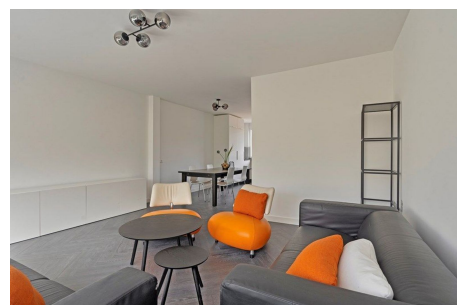
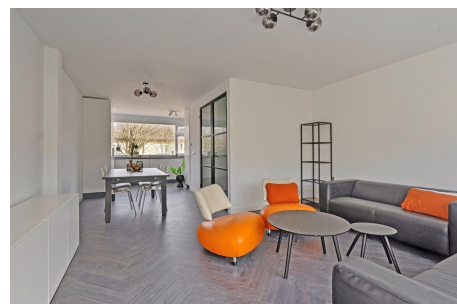


*Save time and money go directly to
the best and quickest agent*



Alpen Rondweg, Amstelveen

Details:

- Size of the property: 135 m2
- Number of bedrooms: 7
- Number of bathrooms: 3
- Type of house: Family House
- Construction year of the house: 1969

Type	: Upper floor apartment
Decoration	: Fully furnished
Garden	: Yes, Backyard, 100×100cm
Living Surface	: 135m ²
Rooms	: 8

Rent € 4.000 p.m. excl. per month