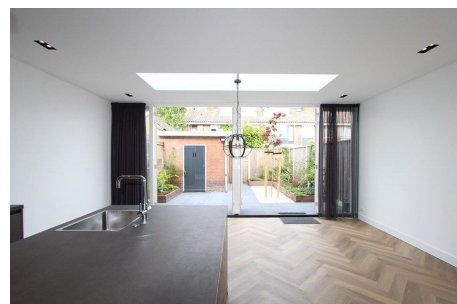


*Save time and money go directly to  
the best and quickest agent*



## Van Weerden Poelmanlaan, Amstelveen

This 5-bedroom RENOVATED house is located on a pleasant and central location. In the vicinity you will find several shops along the 'Van der Hooplaan' and in the 'Groenhof' shopping center with three large supermarkets. The Stadshart with various restaurants, a wide range of shops, a theater, a museum and the public library is a short cycling distance away. The stops for bus and the new 'Amstelveenlijn' are a short walk away, so you can easily and quickly reach Amsterdam, Schiphol and the Bijlmer railway station. Highways such as Beneluxbaan, A9 and A2 are also quickly accessible. In

Type	: Terraced house
Decoration	: Semi Furnished
Garden	: Yes, Backyard, 800×1000cm
Living Surface	: 150m <sup>2</sup>
Rooms	: 6

**Rent € 4.500 p.m. excl. per month**