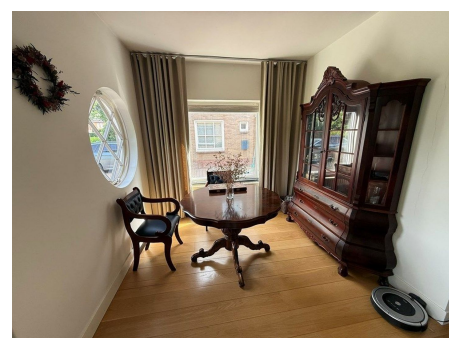
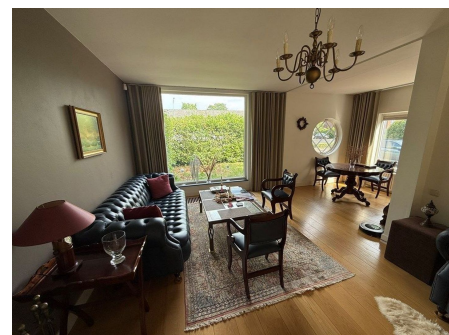


*Save time and money go directly to
the best and quickest agent*



De Savornin Lohmanlaan, Amstelveen

The property is located in the sought-after and popular Elsrijk, on the edge of the Stadshart of Amstelveen where all imaginable residential facilities are within a five-minute walk, including public transportation (bus and express tram), International School, schools and daycare, the fashionable shopping center (featuring the Bijenkorf, AH, etc.), arts and culture (Cobra Museum, music venues, city theater), dining options (restaurants, cafes, terraces), and major highways (A2, A4, A9, Ring A10). A short distance away, you'll find the unique heempark Broersepark and the adjacent

Type	: Terraced house
Decoration	: Semi Furnished, Optionally furnished
Garden	: Yes, Backyard, 100×100cm
Living Surface	: 165m ²
Rooms	: 5

Rent € 5.250 p.m. excl. per month