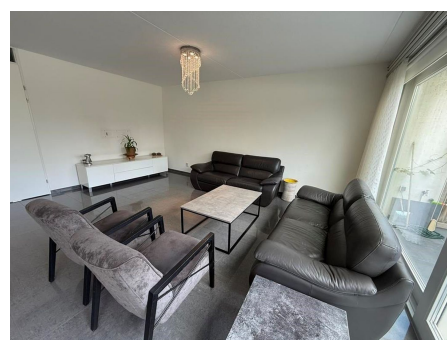
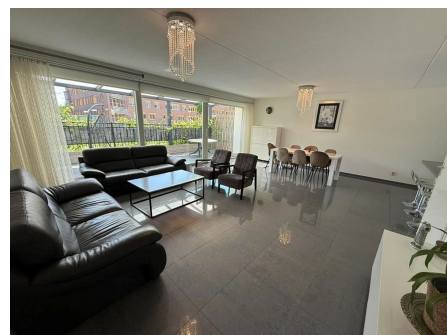


*Save time and money go directly to
the best and quickest agent*



Eliza Van Calcarstraat, Amsterdam

Cozy family corner-house located in a quiet natural area in Osdorp. The lake Sloterpas, shopping center Osdorpplein and tram 1 and 17 are all on walking distance. There are many cafe's and restaurants on Tussen Meer and Pieter Calandlaan which are within 10 minutes walking distance. Station Lelylaan is reachable in 10 minutes by public transport. Schiphol Airport is reachable in 25 minutes by public transport. The highway A10, A4 and A9 are all reachable by car within 10 minutes. Playground available next to the house.

Type	: Terraced house
Decoration	: Fully furnished
Garden	: Yes, Backyard, 100×100cm
Living Surface	: 144m ²
Rooms	: 5

Rent € 3.000 p.m. excl. per month