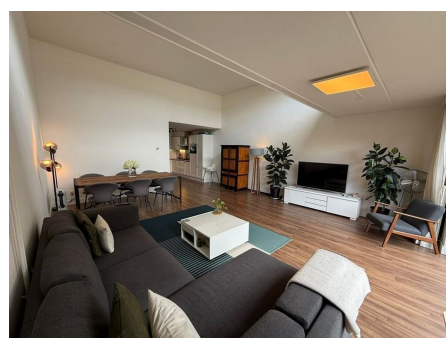
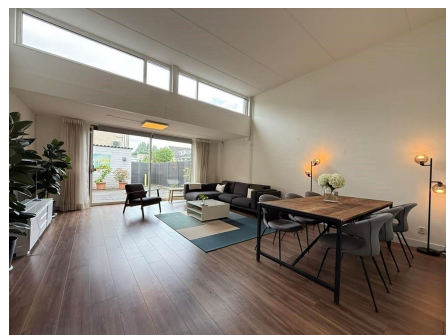


*Save time and money go directly to
the best and quickest agent*



Louis Couperussingel, Amstelveen

Your Ideal Family Home Awaits!

Discover this exceptional 153m² family home, offering spectacular views of the ornamental water in a highly sought-after, child-friendly, and green neighborhood. Designed for comfortable family living, this unique split-level property boasts four bedrooms (with the potential for five), two bathrooms, and a delightful, sunny southwest-facing backyard that feels like an extension of the living space. Enjoy

Type	: Terraced house
Decoration	: Semi Furnished
Garden	: Yes, Backyard, South, 300×400cm
Living Surface	: 153m ²
Rooms	: 5

Rent € 3.600 p.m. excl. per month