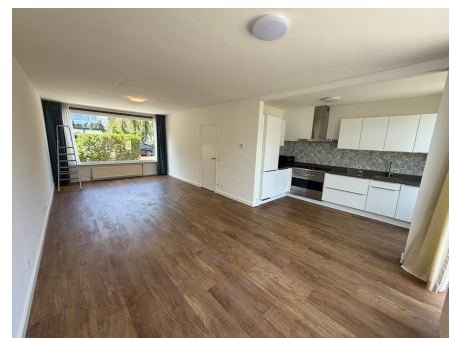


Save time and money go directly to
the best and quickest agent



Eikenrodelaan, Amstelveen

This beautiful house is located in the desirable Randwijck district. This is a very quiet, green, and family-friendly residential area. Randwijck is situated on the border of Amstelveen and Amsterdam, making it a convenient location for commuters and providing easy access to Schiphol Airport. The area is known for its tree-lined streets and its proximity to the vast Amsterdamse Bos, a major recreational area for walking, cycling, and sports. Public transport connections are excellent, with several bus lines running nearby, including a stop right at Eikenrodelaan. These connections link the

Type	: Terraced house
Decoration	: Semi Furnished
Garden	: Yes, Backyard, East, 100×100cm
Living Surface	: 145m ²
Rooms	: 6

Rent € 4.000 p.m. excl. per month