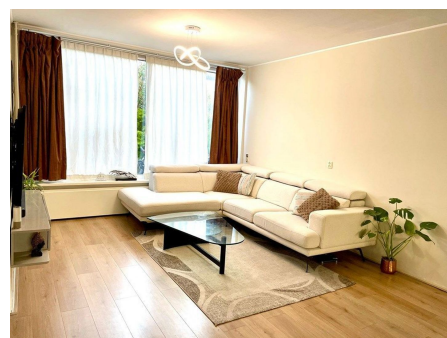
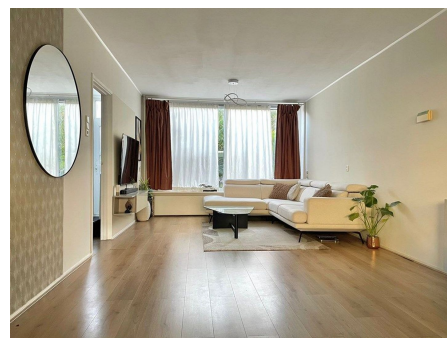


*Save time and money go directly to
the best and quickest agent*



Thomas À Kempislaan, Amstelveen

Thomas à Kempislaan is a peaceful and family-oriented residential street located in the Keizer Karelpark neighborhood of Amstelveen, specifically within the tranquil Augustinuspark area. Developed primarily in the early 1960s, the street is characterized by its rows of classic Dutch single-family homes. Its lush, green surroundings and low-traffic environment make it a highly desirable location for families with children.

Type	: Terraced house
Decoration	: Fully furnished
Garden	: Yes, Backyard, 100×100cm
Living Surface	: 136m ²
Rooms	: 6

Rent € 3.600 p.m. excl. per month