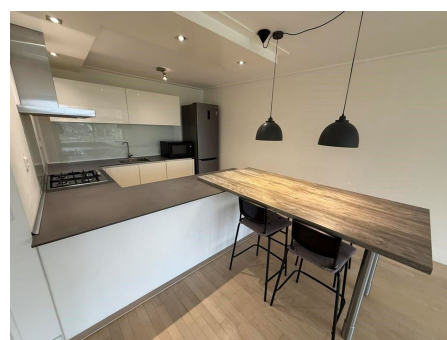


*Save time and money go directly to  
the best and quickest agent*



## Felix de Nobelhof, Amstelveen

Felix de Nobelhof is a tranquil, modern residential pocket situated in the Westwijk-Noord district of Amstelveen, specifically within the Betsy Perkbuilt. Built primarily in the mid-1990s, the area is characterized by well-maintained apartment complexes and lush greenery, often featuring scenic views over local waterways. It is a highly sought-after location for those who appreciate a quiet, suburban environment that remains exceptionally well-connected to the urban core.

**Type** : Up and downstairs house  
**Decoration** : Semi Furnished  
**Living Surface** : 94m<sup>2</sup>  
**Rooms** : 3

**Rent € 2.400 p.m. excl. per month**