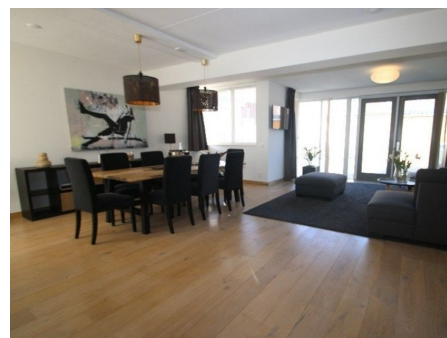


Save time and money go directly to  
the best and quickest agent



## Simon Stevinstraat, Amstelveen

The house is located in a quiet, highly desirable residential area, particularly favored by families and those seeking a peaceful living environment with excellent urban connectivity. It is characterized by its convenient access to a wide array of amenities. Residents can easily complete their daily shopping with a major grocery store located nearby, and the expansive Stadshart Amstelveen shopping center, known for its selection of luxury shops and diverse dining options, is also just a short distance away. Education is a significant draw, with local schools, primary and secondary, as well as the renowned

<b>Type</b>	: Single family
<b>Decoration</b>	: Semi Furnished
<b>Living Surface</b>	: 132m <sup>2</sup>
<b>Rooms</b>	: 6

**Rent € 3.500 p.m. excl. per month**