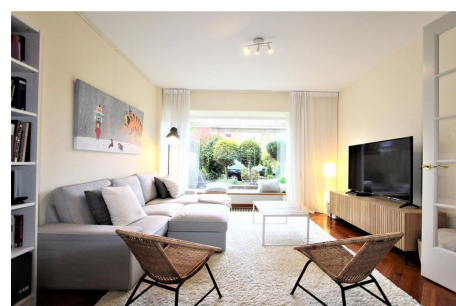
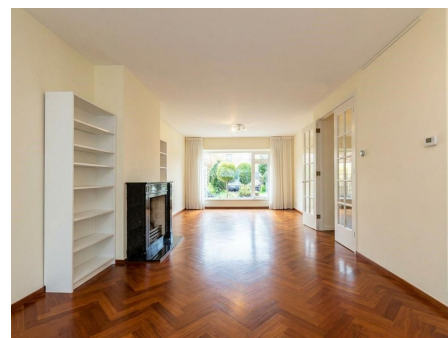


Save time and money go directly to  
the best and quickest agent



## Soerlaan, Amstelveen

Please be aware that there will be no furniture in any case. The furniture on the pictures is just an impression how you could furnish it yourself.

The house is situated in one of the most serene and greenest pockets of Amstelveen, bordering the prestigious Elsrijk and Keizer Karelpark neighborhoods. A short walk or bike ride brings you to the Stadshart Amstelveen, where you can enjoy premium shopping and fine dining. For relaxation, the

Type	: Terraced house
Decoration	: Semi Furnished
Garden	: Yes, Backyard, Northeast, 600×1100cm
Living Surface	: 165m <sup>2</sup>
Rooms	: 5

**Rent € 4.250 p.m. excl. per month**