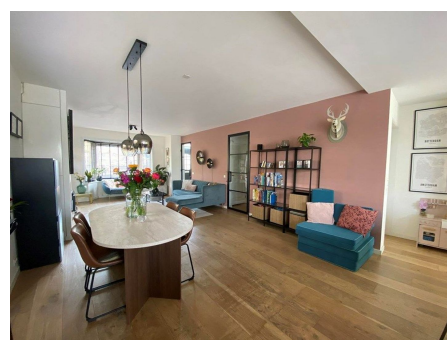
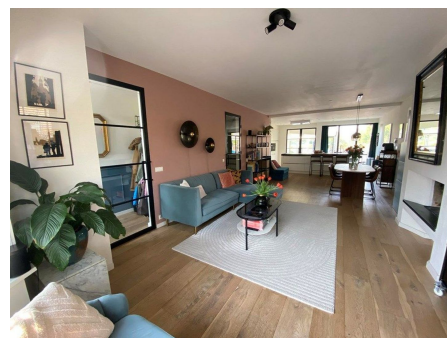


Save time and money go directly to
the best and quickest agent



Legmeerdijk, Amstelveen

The Legmeerdijk offers a unique living experience that perfectly blends the expansive freedom of the Dutch countryside with the modern conveniences of Amstelveen. Situated on the southern edge of the city, this location is defined by its wide horizons, fresh air, and proximity to the beautiful Bovenkerkerpolder. It is a sanctuary for those who appreciate space and tranquility, providing a rural atmosphere while remaining remarkably close to urban amenities.

Type	: Duplex
Decoration	: Fully furnished
Living Surface	: 173m ²
Rooms	: 6

Rent € 3.500 p.m. excl. per month