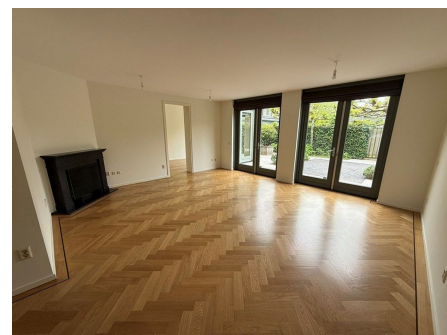


Save time and money go directly to  
the best and quickest agent



## Marjoleinlaan, Amstelveen

Semi-detached villa with 2 private parking spots located in the prestigious and leafy Westwijk district of Amstelveen. The house has completely been touched up/renovated in May 2026.

The Westwijk shopping center is nearby for daily essentials and the beautiful Amsterdamse Bos just a short cycle away. For professionals, the connectivity is a standout feature; the Amsteltram (Line 25) provides a direct, high-speed link to the Zuidas business district and Amsterdam Zuid station. Easy

<b>Type</b>	: Detached house
<b>Decoration</b>	: Semi Furnished
<b>Garden</b>	: Yes, Backyard, 100×100cm
<b>Living Surface</b>	: 208m <sup>2</sup>
<b>Rooms</b>	: 7

**Rent € 6.000 p.m. excl. per month**