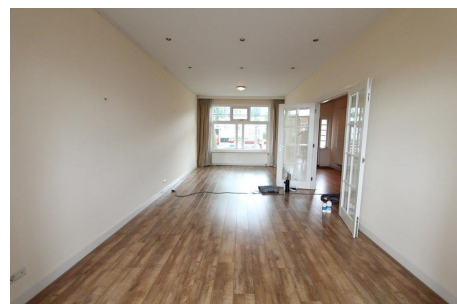


*Save time and money go directly to
the best and quickest agent*



Amsterdamseweg, Amstelveen

This house is located in the residential neighborhood Randwijck. This area is known for its green, suburban character, offering a mix of spacious family homes and well-maintained streets. The house is located on a main road. The house is located below the Schiphol airport flight route.

The neighborhood is highly desirable for its excellent connectivity and proximity to amenities. It is situated just south of the Zuidas business district and Amsterdam's Old South neighborhood, making

Type	: Terraced house
Decoration	: Semi Furnished
Garden	: Yes, Backyard, East
Living Surface	: 250m ²
Rooms	: 6

Rent € 4.250 p.m. excl. per month